

# West Midlands Fire Service Serious Incident Reviews

## From 21 cases

(July 2014 - January 2015)

- Smokers 14
- Living alone 18
- Limited mobility 10
- Alcohol 10
- Mental Health 6
- Care package 7
- No smoke alarm 9
- Disorganised living 9

## Accommodation

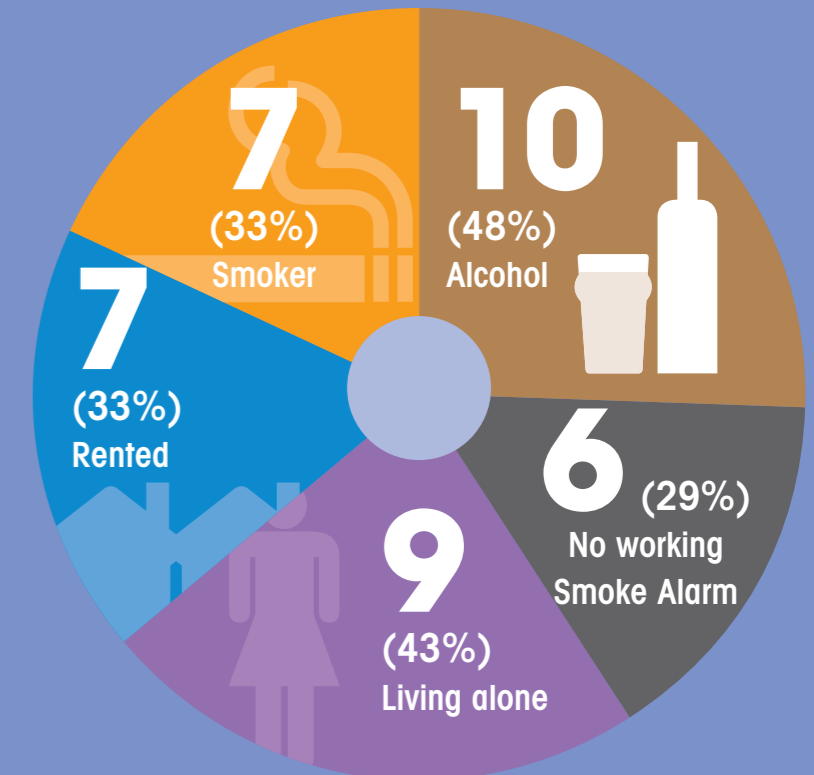
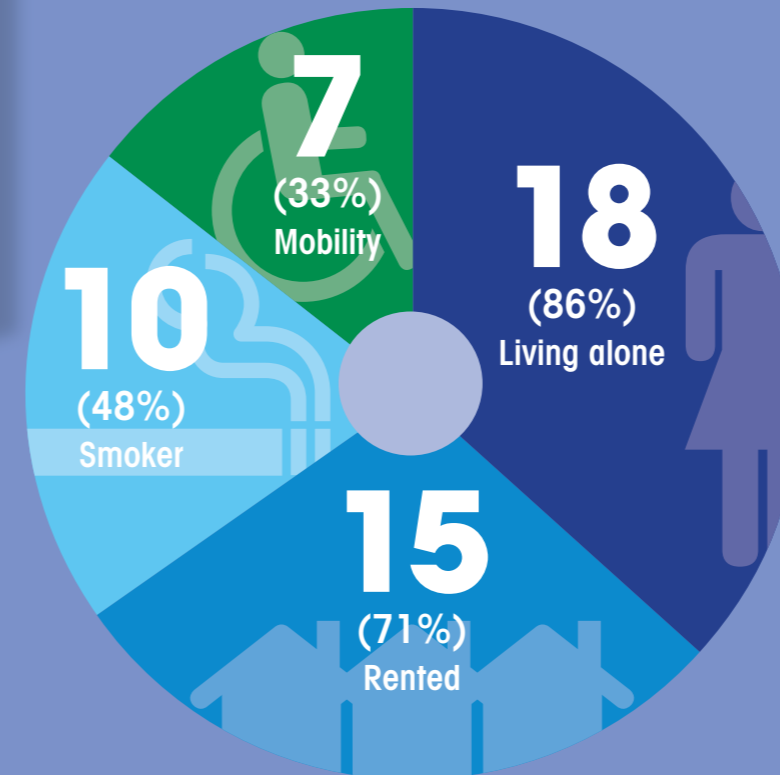
(Rented)

- Housing Association 6
- Privately rented 3
- Council 6

Previous Serious Incident Reviews have highlighted these characteristics of individuals whose incident has resulted in a fatality or serious injury.



21 cases showed 2 areas of combined high risk:

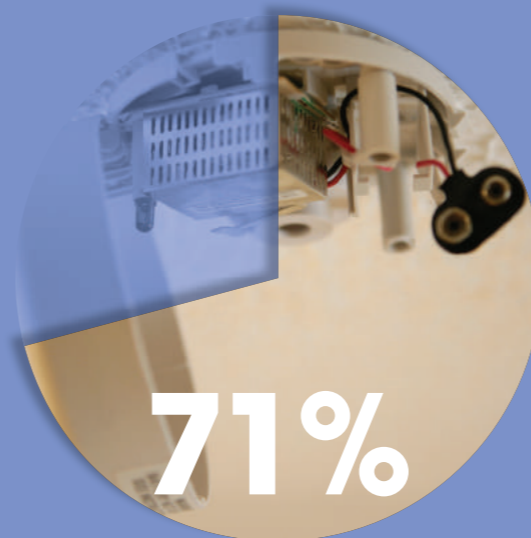


Those **most vulnerable** and in receipt of a **care package** were **more likely to:**



86%

live in rented



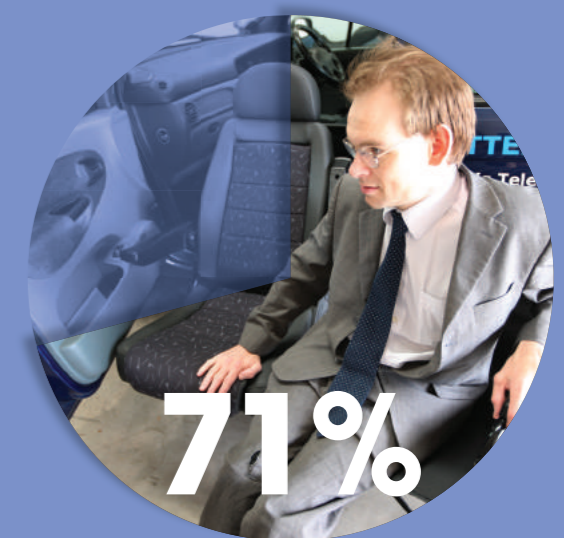
71%

not have a working smoke alarm



71%

be smokers



71%

have limited mobility