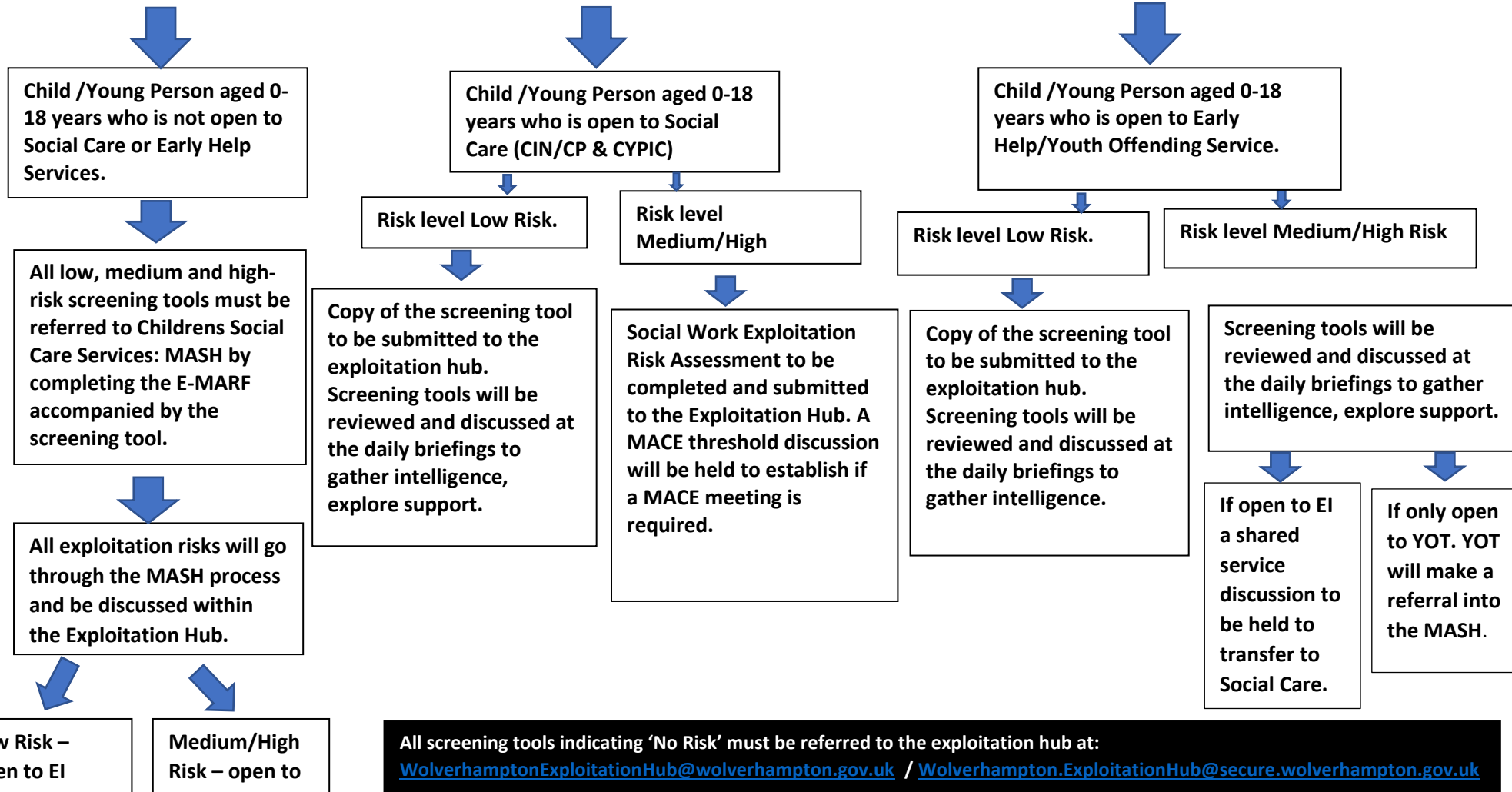


Exploitation Pathway for children and young people open to Early Intervention and Social Care

Professional identifies exploitation risk and Exploitation Screening Tool is completed. For all screening tool outcomes with low, medium or high risks there must be follow up action as detailed below:



At any point if there is reasonable cause to suspect that a child is suffering or is likely to suffer significant harm childrens social care should convene a strategy discussion